

Quick Start Guide

LoadeaTest v0.8

Installation

Before installing, uninstall all previous versions.

- Capturer
 1. Download Capturer.zip
 2. Unzip it in %CAPTURER%
 3. Run %CAPTURER%/Setup.exe

- Controller
 1. Download Controller.zip
 2. Unzip it in %CONTROLLER%
 3. Run %CONTROLLER%/Setup.exe

- Collector
 1. Download CollectorService.zip
 2. Unzip it in %COLLECTORSERVICE%
 3. Run %COLLECTORSERVICE%/MSDE/Setup.exe to install MSDE database.
 4. Reboot your machine to start database services
 5. Run %COLLECTORSERVICE%/db/install_db.bat
 6. Run %COLLECTORSERVICE%/Setup.exe
 7. Reboot your machine to ensure that Collectorservice is started

If you update the product:

- steps 3 and 4 are not mandatory;
- if you have uninstalled MSDE, before step 3, delete files dbrep.mdf and dbrep_log.ldf in %Program Files%\Microsoft SQL Server\MSSQL\$LREP\Data (see Microsoft support article : "Setup Failed to Configure the Server" Error Message When You Install MSDE)
- step 5 deletes the current database: all your tests will be lost !

- Injector
 1. Download Injector.zip
 2. Unzip it in %INJECTOR%
 3. Run %INJECTOR%/Setup.exe

- Analyzer
 1. Download Analyzer.zip
 2. Unzip it in %ANALYZER%
 3. Run %ANALYZER%/Setup.exe

Files are installed in "*Program Files/Loadea*".

By default, they are configured to work in localhost and use local ports.

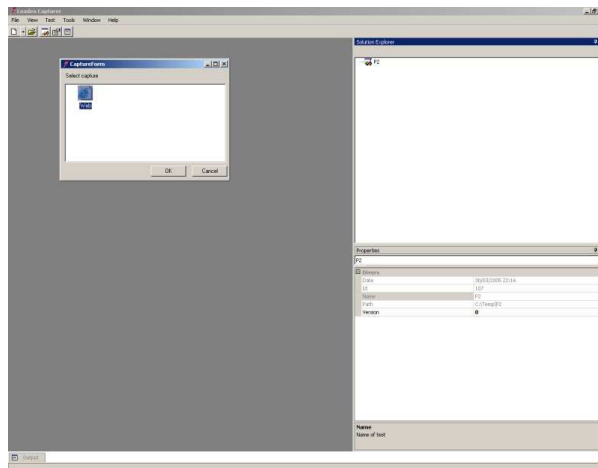
If you want to change this configuration, you have to modify *.exe.config files.

Use

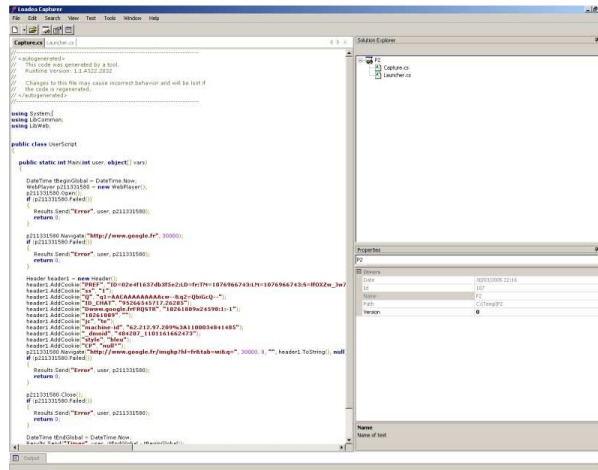
- Create a test
 1. Open capturer
 2. Choose "*File > New > Test*"
 3. Choose "*Empty Test*"
 4. Type the test name : *Test1*
 5. Choose save directory : *C:\Temp*
 6. Click *OK*

You can view at samples in %CAPTURER%/Sample directory.

- First capture
 1. Choose "*Test > Start Capture*"
 2. Chosse Web then *OK*

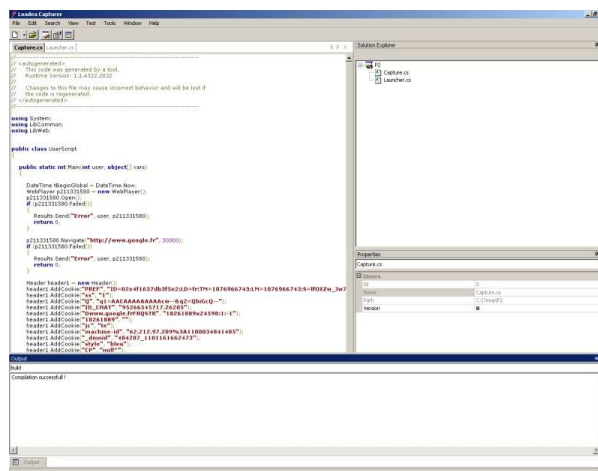


3. Capture starts: open Internet Explorer, go on an url then close IE
4. Choose "*Test > Stop Capture*"
5. Two files are generated: Capture.cs et Launcher.cs



- Compilation

1. Choose "*Test > Build Test*"
2. Debug Window displays "*Compilation successful*"



3. Chosse "*Test > Go*" to replay test

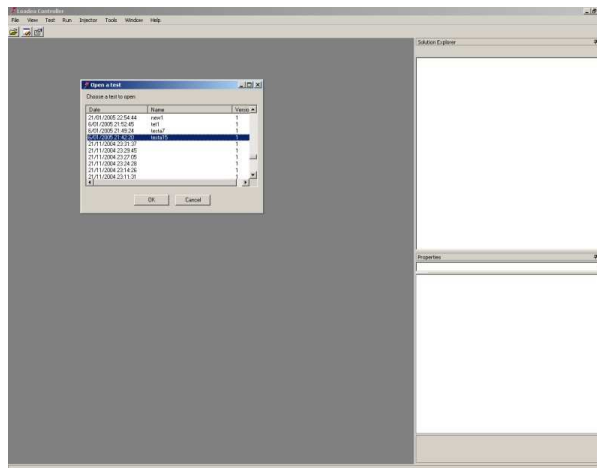
- Save

1. Choose "*File > Save All*" : test is saved in local directory
2. To save the test in database, choose "*File > Publish Test*"
3. (To upload a test from database to local directory, choose "*File > Upload Test*")

- Launch of Controller

1. If Controller is installed on same machine, choose "*Tools > Controller*" : controller will open and will load the current test

2. Else choose "*File > Open*" in controller and choose the test



- Run creation
 1. Choose the test node in the tree and choose "*Test > Add Run*"
 2. Choose "*Run > Add Injector*"
 3. Choose « *Injector > Add Step* »
 4. In step properties tab, set the *Nb* property to 2
 5. Url and port parameters of injector matches default configuration.

- Launch of run

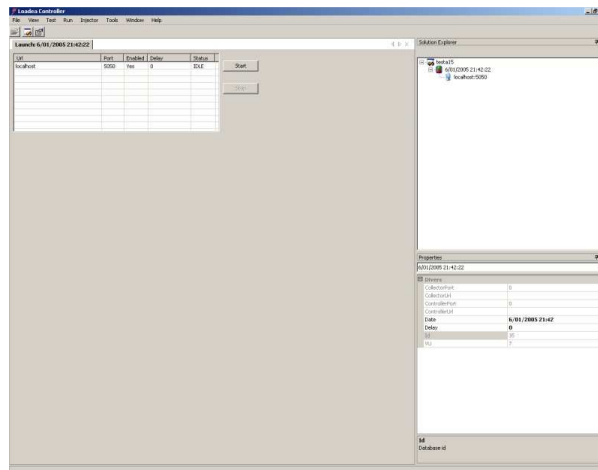
1. Check injector is starting



2. Check collectorservice is starting



- Choose the run you want to test in the tree and choose "*Run > Launch*"



- Click on Start button : a graph shows test processing (creation and deletion of virtual users)
- Wait until the test stops.
- Close the launch tab by clicking on the cross in the top-right corner

- Results**

- To launch Analyzer from Controller, choose "*Tools > Analyzer*"
- Choose "*File > Open*"
- Select a test to analyze and *OK*
- In the tree, right click on a run and choose "*Calculate*"
- To view graphics and reports, right click on a node and choose "*Show*"

